

STUDENT COMMUNITY SUMMIT

Join the Celebration

Months of hard work and creative effort will be displayed at the **STUDENT-COMMUNITY SUMMIT** Celebration from 4:00 – 6:30 pm on Tuesday, April 14, at the Technology Center for the Delta in Wynne. The public is encouraged to attend and learn what students from middle school through graduate school are doing to promote prosperity and well being in the Delta.

The Celebration showcases community development projects completed in the Crossroads Coalition this year. Students, faculty facilitators, and community sponsors from the EAST programs in Coalition middle schools and high schools, East Arkansas Community College, the Clinton School of Public Service, and the University of Arkansas at Fayetteville will set up displays and give presentations about their projects.

The **SUMMIT** was established to test a simple but profound idea: students who become involved in solving some of the problems facing their communities are more likely to become the future leaders who will transform the Delta – and eventually all of Arkansas – into a more prosperous and desirable place to live and work. It began in September 2008 when the Summit workshop brought together EAST students, educators, and community representatives from the Crossroads Coalition and representatives from higher education in Arkansas to identify projects for this school year.

The **SUMMIT** Celebration is sponsored by the Crossroads Coalition and the University of Arkansas Economic Development Institute (UAEDI). For details about the Summit, visit the Crossroads website – <http://CrossroadsCoalition.org> – and click on **SUMMIT & SEED**. For more information contact:

- **Joy Lynn Bowen**, Celebration event organizer, at (870) 347-1147 or e-mail Joy.Bowen@wrrhc-ar.org ;
- **Melissa Rivers**, Crossroads Coalition executive director, at (870) 238-5300 or e-mail mrivers@crossroadscoalition.org ; or
- **Otto Loewer**, UAEDI director, at (479) 575-5118 or e-mail OJL@uark.edu .

What's Inside

SUMMIT Celebration	1
RIVERS: Crossroads Directions	2
Augusta Wellness	3
COMMUNITY CALENDAR	4
REGIONAL REPORT	5
Jacksonport Easter Egg Hunt	
Village Creek Egg Extravaganza	
Helena-West Helena Clean-Up	
LOEWER: Crossroads Reflections	6
EAST Students Win Awards	7
LEGISLATIVE UPDATE	8
Arkansas Foodbank Network	9
Moving Jackson County Forward	10
Earthquake Updates	11
REGIONAL REPORT	12
GumboFest in West Memphis	
Fashion Expo in Blytheville	
Delta Byways Award Banquet	
REGIONAL REPORT	13
Wild Hog Music Fest/Motorcycle Rally	
Springtime on the Mall in Blytheville	
On the Rock "n Roll Highway	14
Stimulus Summary	15
CONFERENCE CALL	
Delta Regional Authority	16
Delta Initiative Postponed	16
Transportation in Transformation	17
NATIONAL NOTES: USDA	18
NATIONAL NOTES: Arts in Crisis	19
RESOURCE REVIEW:	20
Agile Agriculture, Animal Welfare	
RESOURCE REVIEW	21
Small Town, Big Ideas; GO! Grants	
APAC Workshop	22
CROSSROADS CONTACTS	22
REGISTRATION FORMS	23
Delta Byways Banquet, GumboFest	



by
Melissa Rivers

*Melissa Rivers is
Executive Director of the
Crossroads Coalition*

Recently, I had the personal experience of learning that a sixteen year old that I'm very close to has made the decision to drop out of school.

I can't tell you how devastated I have felt since I found out. This is a young person that has all the potential in the world, has limitless dreams, is smart and can do anything she sets her mind to. In her mind, her options are limited and this is the best choice facing her. In my mind, I know that while this may be the easiest choice of the moment it will have far reaching affects on her for the rest of her life.

Unfortunately, she has grown up in an environment that is not equipped to nurture the vision of what she can become beyond her current circumstances. I am not giving up on this situation; at the same time it makes me realize that this has become the rule in the Delta and not the exception.

Our young people truly are our future. As a region, we have to collectively work together to foster their vision of what they can achieve in life, what training and education they will need to realize their dreams and what their dreams will yield for them and their families.

The byproduct of this effort will be stronger adults equipped to share that knowledge with their children. It will also be stronger communities filled with leaders with the vision and understanding of what we need to grow our communities and create prosperity.

One emerging example of this is the Student Summit Initiative that the Crossroads Coalition, the University of Arkansas Economic Development Institute and EAST Labs around the region began in 2008. This program engages students in

utilizing the skills they are learning in the EAST Labs and applying those skills to Community Development projects identified throughout the region.

This helps communities in our region to work on needed projects with fewer resources. Most importantly, the students become involved in making their community better and stronger. It creates an opportunity for the students to take an ownership stake in their community.

It's important to note that these are not easy projects. Some involve mapping with GIS systems, some involve learning and applying the concepts of city planning, some involve understanding and implementing information gathering and historical archiving, and many other things.

On Tuesday, April 14th the Crossroads Coalition and UAEDI will come together to celebrate the accomplishments of these students. As a partner to the Crossroads Coalition, I hope you will be able to join us. The celebration will be at the Tech Center for the Delta in Wynne. Registration will begin at 4:00 pm and the celebration will begin at 4:30.

I'm not only inviting you to a celebration of these students, I'm inviting you to work alongside the Crossroads Coalition in making sure that the young people of our region are surrounded by a network of support, encouragement and resources that will make their lives better and our region stronger.

Together we can change the path of the Crossroads Coalition region. It's going to take each one of us developing the plan, working the plan, measuring our progress, and keeping the goal in sight. There is no question that we can accomplish this.

RURAL HEALTHCARE**Lincoln To Host Augusta Meeting**

Senator Blanche Lincoln will host a public meeting at the Augusta Wellness Center at 10:30 - 11:30 am on Tuesday, April 14, to “take the pulse” of rural health care in Arkansas. Participants will discuss the challenges and potential solutions for accessing quality and affordable health care. The public is invited to attend.

The Augusta meeting is one of five Sen. Lincoln is hosting in her “CALL TO ACTION: Taking the Pulse of Rural Health Care” project. The two-week, five-city tour will also include stops in Clinton, Nashville, Lake Village and Springdale.

“Like many Arkansans, I’m troubled by rising health care costs and the barriers many Arkansas families face accessing a quality, affordable health plan,” Lincoln said. “Nearly half a million Arkansans are uninsured, including 66,000 Arkansas children. The costs in both human and financial terms are felt by everyone. That’s why I’m working from my seat on the Senate Finance Committee to give Arkansans a voice in the debate on health care reform. It is one of the most urgent issues facing our nation, and the time for action is now.”

According to the USDA, one of every 19 people living in the U.S. now relies on a Community Health Center for primary care. These health centers treated more than 16 million people in 2008; nearly 40% of patients treated have no health insurance and one-third are children. Community Health Centers also support more than 105,000 jobs, including physicians, nurses, dentists, and other health professionals, and leverage more than \$9 billion in needed health services.

The Augusta Wellness Center is located at 905 North 4th Street in Augusta. For more information about the meeting, please contact Margie Goss toll-free at 800-352-9364.



U.S. Senator Blanche Lincoln

RURAL OUTREACH**Building A Stronger Rural America**

Arkansas Sen. Blanche Lincoln is a key figure in the Rural Agenda recently unveiled by the Senate Democratic Caucus. Sen. Lincoln is the first Chair of Rural Outreach and was instrumental in the launch of the new Rural Outreach web site.

Both initiatives are part of Senate Democrats’ efforts to highlight issues important to rural communities and to further promote policies that will benefit rural America. The agenda includes revitalizing and reinvesting in rural healthcare, education, economic development, agriculture, energy and natural resources, veterans and National Guard, rural law enforcement and Homeland Security, and infrastructure. Details of the agenda are on the Rural Outreach Web site at www.democrats.senate.gov/rural.





**Crossroads
Coalition Pillar
Groups**

will not meet in April. Participants are encouraged to attend the Student-Community SUMMIT Celebration on April 14 at 4:00 pm

For additional details on some events, click on the event title.

April

11 Easter Egg Hunt
Jacksonport State Park, **Newport**
CONTACT: 870.523.2143

12 Easter Egg Extravaganza
Village Creek State Park, **Wynne**
3:00 pm - 5:00 pm
CONTACT: 870.238.9406

13 GumboFest Entry Deadline

14 Sen. Blanche Lincoln
Augusta Wellness Center, **Augusta**
10:30 - 11:30 am
CONTACT: 800.352.9364

14 Crossroads SUMMIT Celebration
Technology Center for the Delta
Wynne
4:00-6:30 pm
CONTACT: 870.238.5300

**15 APAC Workshop:
How to Complete Bid Forms**
Technology Center for the Delta,
Wynne
1:00 -3:00 pm **WORKSHOP**
FREE and open to the public
3:00 - 4:30 pm **Office Hours**
Instructor available to counsel anyone on selling products or services to federal, state, or local governments

18 Great American Clean-Up
Helena-West Helena
CONTACT: 870.717.1450 or 870.338.9144

20-22 Global Green Initiative: Transportation in Transformation
Memphis
CONTACT: (901) 678-5000

22 Administrative Professionals Luncheon and Fashion Expo
Arkansas Northeastern
Blytheville
11:30 am - 1:30 pm; \$26
CONTACT: 870.752.3167

22-26 Wild Hog Music Festival and Motorcycle Rally
Helena-West Helena
CONTACT: Johnny Broome at 870.572.1000 or Jbroome68@gmail.com

27-28 Delta Regional Authority Annual Meeting
Memphis
CONTACT: 501.686.6195

28 GumboFest
West Memphis
9:00 am - 6:30 pm
CONTACT: 870.735.1134

29 Nomination Deadline: USDA Biotechnology Advisory Commission

30 Grant Deadline: Quaker Oats

May

2 Springtime on the Mall
Blytheville
10:00 am - 5:00 pm
CONTACT: 870.762.2012

Jacksonport Hosts Easter Egg Hunt

Jacksonport State Park is inviting the public to participate in the 25th annual Easter Egg Hunt on Saturday, April 11 at 11:00 am. In the event of rain, the hunt will be rescheduled for April 12 at 2:00 pm.

The Easter Bunny will be on hand to visit and take pictures with children before and after the event. Colorful eggs containing candy and prizes donated by area businesses will be hidden throughout the park. Other activities include face painting and children's carnival.

Children must be between ages 1 and 12 to participate. Egg hunters should arrive at the park before 11:00 am and gather in the courtyard in front of the Courthouse. The hunt will begin **PROMPTLY** at 11:00 am. The hunt areas are divided into different age groups. Children ages 1-4 may be accompanied by one adult, but children in age brackets 5-8 and 9-12 are not allowed adult assistance.

Park officials are asking for community volunteers to ensure the event runs smoothly. For more information contact park officials at 870-523-2143.



Jacksonport Courthouse

Easter Egg Extravaganza

Village Creek State Park in Wynne will host the Easter Bunny and area children for an afternoon of fun and excitement on Sunday, April 12. At 3:00 pm the children will be turned loose on a landscape dotted with brightly colored Easter eggs.

Admission is one canned food item for the local Food Pantry. For more information, call 870-238-9406 or email villagecreek@arkansas.com



Helena-West Helena Cleans Up

Paint brushes, weed eaters, and trash bags will be in demand on Saturday, April 18 in Helena-West Helena as volunteers and city workers team up for the Keep America Beautiful Great American Cleanup. The Helena-West Helena Code Enforcement Office and Main Street Helena are joining forces to sponsor a community-wide cleanup from 9:00 am to 1:00 pm

"Main Street Helena is excited about joining the Code Enforcement Office in this effort, and encourages everyone to turn out," said Paula Oliver, Main Street Helena executive director. The Code Enforcement Office will identify specific areas of the community that need attention.

Volunteers will assemble at the Cherry St. Pavilion to begin the work day, which will also end there with a cook-out for participants by the Helena-West Helena Fire Department. All interested groups and individuals are encouraged to participate. For more information, contact Code Enforcement at 870-717-1450 or 870-338-1056, or the Main Street Helena office at 870-338-9144.



What SUMMIT Dreams May Come



by
Otto Loewer

Dr. Otto J. Loewer is director of the University of Arkansas Economic Development Institute (UAEDI) and is an advisor to the Crossroads Coalition as part of UAEDI's regional partnership core activities.

Perhaps you've seen the 1998 movie entitled "*What Dreams May Come*" starring Robin Williams. It's a somewhat disturbing movie about determining reality in a dream-world setting.

Dreams are illusive types of things, often murky and nonsensical. Some are filled with fantasy, others with possibilities. They are usually forgotten quickly but not always.

Some dreams come when we are sleeping. Others find themselves in our consciousness through ideas that suddenly pop into our mind, often unexpectedly as part of interacting with others. It is this latter type of dream that often transforms us when we consider new possibilities. These dreams provide the light needed to see the pathway to a new reality. It is one example of this transformational light that I want to tell you about.

It was early in 2008 when a group from the Crossroads, EAST and the University of Arkansas met to consider one dream, that of a health network. But, in this meeting another dream was born, that of the Community Development Summit (SUMMIT). Ron Hardy, EAST representative, offered a remarkably simple but profound idea of how student projects from UA's SEED (Students Engaged in Economic Development) program and EAST could fit together.

The "dream" was that SUMMIT would provide the mechanism where students from middle school all the way through graduate school could become directly involved in helping real people in real communities solve real problems. In doing so, these students would become vested in their communities and in the future of Arkansas.

But, dreams don't become reality without visionary and talented people committed to making something good happen for the region. Fortunately, there

are a lot of these folks in the Crossroads. And, they are joined by many public and private partners at the state and national level who have helped make the Coalition an emerging national model for broad-based development in rural communities.

So what happened? The Crossroads Pillar Groups went to work. EAST facilitators and community leaders led the way. By August, well over 100 ideas for student projects were generated and every county was represented! These ideas were put in a spreadsheet on the Crossroads web page so that they could be shared.

On Sept. 15, the inaugural SUMMIT Project Identification Event was held at the Technology Center for the Delta. EAST students came from across the Crossroads. Representatives from the University of Arkansas at Fayetteville, the Clinton School, Crossroads community colleges (ADTEC), and other Crossroad Pillar Group partners participated. It was a great day filled with energy and excitement!

So, has the SUMMIT dream turned into a Crossroads' reality? And specifically, has anything tangible and good come from these student projects?

To get the answers to these questions, you are invited to come to the SUMMIT Student Celebration event to be held April 14 on Tuesday afternoon from 4:30 – 6:30 pm at the Technology Center for the Delta in Wynne. You'll be able to visit with students and sponsors and "dream" how your public or private organization might participate next year. Furthermore, you can show support for the young people who are hard at work helping shape the future of the region and state.

What SUMMIT dreams may come? I dream that this SUMMIT could eventually lead to sustainable prosperity and well-being for the Crossroads and all of Arkansas. I plan to be there on April 14 to see the beginning of this new reality. I hope that you will join me.

Students from the EAST programs in Harrisburg and Brinkley received awards for their community projects at the 2009 EAST Annual Conference March 4-5 in Hot Springs. In addition, five Crossroads Coalition EAST programs – Brinkley High School, Harrisburg High School, Harrisburg Middle School, Newport High School, and Osceola High School – received a Superior Rating for the quality of their impact on their community.

The 10th Annual EAST Conference brought more than 170 EAST programs and close to 2,000 students from around the nation for a three day celebration of student achievement. EAST, which stands for Environmental and Spatial Technology, is based on the belief that students can go well beyond what has ever been expected when given the proper learning atmosphere, appropriate tools and resources, access to real-world problems and support.

This year, the EAST Conference expanded on its core value of community service by working with Feeding America and asking all conference attendees to collect peanut butter to feed America's hungry. Little Rock Middle School students designed a project that aimed to collect 2000 jars of peanut butter – one for every student attending the conference. The students worked with Feeding America to distribute the peanut butter to food banks. The project actually collected 4,650 pounds of peanut butter, equaling 3,651 jars.

Peanut butter was selected because of its high protein and nutrition values and long shelf life without refrigeration. It is highly valued by food banks, but is rarely donated because it is expensive. Food banks consider peanut butter to be "worth its weight in gold." However, recent reports of salmonella -tainted peanut butter has damaged its reputation.

"Our students saw the confusion and misinformation surrounding what peanut butter products are ok and what are not as a perfect opportunity for an EAST project," said Matt Dozier, EAST President and CEO. "They have taken it on as such and succeeded with flying colors."

This year, 108 different student teams submitted their applications for various showcase competitions. Crossroads Coalition EAST program winners included:

ARCHWAY'S VERSACAD SHOWCASE

Daycare Evacuation – Calen Wallace, Harrisburg High School

ARKANSAS AUDUBON'S NATURAL LEADER SHOWCASE

Rising Star Awards -- Brinkley High School - EAST Stream Team

The Natural Leader Showcase Award -- Bottomland Hardwood Forests, Brinkley High School

DIGITAL TECH FRONTIER SHOWCASE

Elementary Virtual Library - Kyle Mitchell, Maria Parker, Shelby Broglen, Harrisburg Middle School

ESRI SHOWCASE FINALISTS

Honorable Mention: *Tornado Sirens*, Harrisburg Middle School

For more information about EAST programs, visit the website at www.EASTinitiative.org



Come to the

SUMMIT CELEBRATION!

These award-winning EAST students—and many more—will have their projects at the

Student- Community SUMMIT Celebration

Tuesday, April 14,
4:00 - 6:30 pm
at the
Technology Center
for the Delta

Come and see the displays and visit with these outstanding young people, You'll see how bright the future of the Delta really is.



by

Kay Brockwell

Kay Brockwell is Director of Economic Development for the City of Marion and serves on the Crossroads Coalition Board of Directors.

Well, it's just about all over but the shouting. The 87th General Assembly is set to adjourn April 9. All in all, it's been a reasonably decent session for the Crossroads Coalition, although a couple of our priorities are going right down to the wire and won't be decided until the final couple of days of the session.

One of those is our biggest priority -- ADTEC funding, and by extension, our own funding for operations for the Crossroads Coalition. We in the Delta, like a lot of projects all over the state, have taken a significant hit to our financial prospects with the revelation from the Dept. of Finance and Administration that they had erred in their revenue projections for fiscal 2010 by \$100 million. That means money to balance the budget comes out of the General Improvement Fund, so there is less money in the general improvement fund to pay for requests like the ADTEC funding. Word today is that Gov. Beebe is contending that legislators must take care of the higher education funding requests out of their own GIF allocations for their districts. I would expect final decisions to be made no later than Tuesday.

Other Crossroads agenda items and our scorecard:

- **THE AEDC LEGISLATIVE PACKAGE:** This was not a groundbreaking package this year, with the exception of the move to change the 4-year-old "Superproject" amendment to remove the minimum investment and job creation numbers, so it now can be used for more projects statewide. The proposal was approved by the House as one of the three to be referred to voters next fall, and is awaiting Senate action. It is worth noting that our own Rep. Clark Hall (D-Marvell) voted in committee not to recommend a "do pass" for that amendment, although he voted for it in the floor vote.

- **USURY AMENDMENT:** One other amendment we backed, the public finance/usury amendment, sponsored by Rep. Bruch Maloch (D-Magnolia) is still in flux about being referred out. That proposed amendment is scheduled to come up in the Joint Committee on State Agencies and Governmental Affairs on Monday. If it is not passed, it will be impossible for most public agencies, including cities and counties, to sell bonds to finance improvements until the financial markets improve.
- **STAR BONDS** and the authority for local governments to use property taxes to fund economic development were not introduced. Only three amendments can be referred and the usury amendment and Amendment 82 revisions were deemed more necessary.
- **CLOSING FUND:** The Governor's Quick Action Closing Fund was approved at for \$50 million. This money can be used to close deals bringing new development to Arkansas. The AEDC's marketing department and overall budget were neither increased nor cut.
- **IN EDUCATION INITIATIVES**, a major one was the inclusion of community colleges and non-traditional students in the lottery scholarships. Older students and high school drop-outs can now qualify for lottery scholarships if they score well enough on the ACT, and have the ability to "earn in" by paying tuition for one year and earning and retaining a specified grade-point average.
- **SMART CORE CURRICULUM** :A bill passed and went to the Governor requiring colleges to report how many students needing remedial classes had opted out of the "smart core" curriculum in high school.

(Continued on Page 9)

- **IN COMMUNITY DEVELOPMENT**, a significant bill by Rep. Tracy Pennartz (D-Ft. Smith) that would create investment tax credits for investments in rehabilitation of downtown districts has passed the House and is in the Senate Revenue and Tax Committee. It would allocate a significant portion of those incentives to cities of 50,000 and under population, and could be the incentive that would jump-start downtown development in many small Delta towns.
- **REGIONAL, COMMUNITY-BASED INVESTMENT FUND**: A bill that has some definite possibilities for allowing the Crossroads Coalition to set up a regional, community-based investment fund -- a "venture capital fund for the Delta," if you will, is currently in the House, where it had stalled but was amended Friday and may yet get approval. While it wasn't part of our legislative agenda, we certainly support it and are excited about the possibilities it could open up for us. That's HB 1910, by Rep. Keith Ingram (D-West Memphis).

All in all, we've made some inroads, and would have made more had the financial crisis not have overrun us. It's not too late to make a few calls and try to wield some last-minute influence on some of these issues. And after a short break, we expect to begin working immediately on our package for 2011. We're learning more about this business with every session, and we fully expect to be more and more successful every session.

Governor Urges Support for Food Bank

As the economic crisis deepens, hunger is increasing in Arkansas, as in all of America. At a press conference last week Gov. Mike Beebe explained the critical role played by the Arkansas Foodbank Network (AFN), and the challenges it now faces.

Beebe made a plea for donations to AFN, asking everyone to do what they can to help, and to reach out to encourage their friends and family to donations as well. The Foodbank Network is in danger of losing funding for a warehouse in central Arkansas to serve all 75 Arkansas counties if it cannot raise \$1.5 million in matching funds.

"We talk about economic development, health care and education, but if people are hungry then little else matters," Beebe said. "This is a major, major deal for the people of Arkansas, not just Little Rock or North Little Rock. All 75 counties will be affected, all races, all age groups. These people are not just statistics. They are real people. Real moms. Real dads."

Last year AFN distributed more than 8.5 million pounds of food to provide for about 23,000 families each week, but that number is climbing rapidly. The new warehouse will allow AFN to handle the projected 17 million pounds of food needed to feed hungry Arkansans by 2011.

A recent survey found that half of all Arkansans served by AFN are children or the elderly. It also found that 52% of clients served by AFN report having to choose between paying for food and paying for utilities, 43% have to choose between paying for food and paying for medicine or medical care, and 35% have to choose between paying for food and paying for rent or mortgage. For more information on the AFN and how to donate, visit their website: <http://www.arkansasfoodbank.org/>



Thanks to all of you who picked up the phones and called legislators, or called local folks to ask them to call legislators. It's the biggest single thing we can do, besides vote, to participate in our government.



Kay Brockwell



Newport High School

JACKSON COUNTY

Group Tackles Education Issues

Residents of Jackson County are urged to attend a county-wide meeting on April 18 from 6:00 - 7:00 pm in the auditorium at the ASU-Newport Center for the Arts. This meeting will launch *Moving Jackson County Forward*, a cooperative project of the Jackson County School District and the Newport Special School District.

Moving Jackson County Forward, comprises a series of meetings designed to help encourage growth and educational improvement in the county by helping community members become more involved in the local school districts. The strategic planning process is expected to extend over several months and future meetings may be held in other locations around the county to help involve as many people s possible.

The impetus for the project arose from the recent Governor’s Conference on Education and Economic Development, according to Jon Chadwell, Executive Director of the Newport Economic Development Commission.

“The Conference leaders strongly encouraged counties to engage in a strategic planning process for school improvement,” he added. “Every county in Arkansas was asked to complete this process.”

The Agenda: for the first meeting will be a review of demographic information to see where we are as a county. In the second meeting, participants will conduct a SWOT analysis to evaluate the strengths, weaknesses, opportunities and threats concerning our school districts. Subsequent meetings will be designed to get input and involvement from as many people as possible to help create the best school environment in the state right here in Jackson County.

Arkansas Receives Earthquake Monitors

Gov. Mike Beebe released \$300,000 in general improvement funds to purchase six broadband seismic monitors that will detect and locate earthquake activity throughout Arkansas. The Arkansas Geological Survey will place the monitors throughout the state to improve measuring capabilities in areas between existing stations around the New Madrid seismic zone in northeast Arkansas and those in Oklahoma.

“Although Arkansans may not think about earthquakes often, our proximity to the New Madrid zone makes them a realistic concern for our state,” Gov. Beebe said. “Our emergency responders already train and prepare for earthquakes. These seismic monitors will give us better information about the small tremors we experience now and help us prepare for stronger earthquakes that could impact Arkansas in the future.”

The earthquake data collected by the new monitors will be shared with researchers and the public on a regular basis. The geological survey will also post updated maps of recent seismic activity online.



Display panel for seismic intensity



Data processor for a seismic intensity monitor



Seismic intensity meter

Earthquake Updates

New Madrid Anniversary

December 2011 will mark the 200th anniversary of the first of the series of earthquakes along the New Madrid fault that have been called the largest successions of earthquakes, including the most intensive ever indirectly inferred (not recorded), in the contiguous United States. There were also numerous aftershocks in the area for the rest of that winter with research indicating a series of some 2,000 earthquakes overall.

The quakes began with an initial pair of very large earthquakes on December 16, 1811, followed by aftershocks and another large, related earthquake on January 23, 1812. The New Madrid Earthquakes culminated in a mega-quake of greater than 8.0 on the Richter scale on February 7, 1812. Witnesses said the Mississippi River reversed its flow, and geological evidence shows that its course was changed significantly.

Estimates based on damage reports and eyewitness accounts from as far away as Philadelphia indicate that the earthquakes were felt strongly over roughly 50,000 square miles, and moderately across nearly 1 million square miles. By comparison, the historic 1906 San Francisco earthquake, was felt moderately over roughly 6,000 square miles.

Planning is currently under way to commemorate the New Madrid outbreak, but more serious plans focus on ensuring the region is prepared should the New Madrid fault rumble back to life.



Artists rendering of a riverboat wrecked by the New Madrid earthquake.

Tuttle Named Earthquake Coordinator

Recently, the USGS announced that Dr. Martitia Tuttle has been selected as the USGS Regional Earthquake Coordinator for the Central and Eastern U.S. Tuttle held research positions at the University of Maryland and Lamont-Doherty Earthquake Observatory and is a recognized leader in the field of paleo-seismology and earthquake hazard in the central and eastern U.S. Her research has led to improved age estimates of paleo-liquefaction features and the development of a paleo-earthquake chronology for the New Madrid Seismic Zone.

She has conducted studies in the central, northeastern, and western United States, southeastern Canada, and northeastern Caribbean, where she has played a pivotal role in identifying and dating earthquake-induced liquefaction features and assessing the earthquake potential of those regions. In addition, she has been involved in paleoseismic studies in Australia and Portugal.

Tuttle has Bachelor's Degrees from Portland State University (Geology) and Oregon State University (Soil Science), a Master's Degree (Earth Science) from the University of California, Santa Cruz, and a Doctorate of Philosophy (Geology) from the University of Maryland. She assumed the position of USGS Scientist in Charge of the Memphis Office in February.



Dr. Martilla Tuttle



Return of GumboFest

Eat your heart out, Iron Chef. Kitchen Stadium can't compare to the Mid-Continent Plaza in West Memphis on Saturday, April 18, when teams will compete to see who makes the Greatest Gumbo. Trophies will also be awarded for best chicken wings and exotic meats/things.

The 5-person teams will start setting up at 10:00 am and begin cooking at noon. Blind judging will start at 2:00 pm for the Best Booth. at 3:00 p.m. for chicken wings, 4:00 p.m. for exotic meats and 5:00 p.m. for gumbo. The results announced at 6:00 pm.

In addition to tasting samples of the competing goodies, visitors can enjoy a variety of bands during GumboFest. The Mud Flap Kings will play from noon to 3:00 pm, followed by Nettie Parr and the Delta Revival. The Kings of the Delta will take the stage at 5:00 pm and play until the festival closes at 9:00 pm.

Deadline for entering a team is Monday, April 13. An entry form and instructions are included in this newsletter. For more information, call the West Memphis Chamber of Commerce at 870-735-1134.

Administrative Professionals' Fashion Expo

Arkansas Northeastern (ANC) is partnering with Blytheville retailers to present the Administrative Professionals' Fashion Expo and Luncheon from 11:30 am - 1:30 pm on Wednesday, April 22, at the Governor's Ballroom in Statehouse Hall. Participants will see the latest in workplace fashion for professional women from their spring and summer lines of clothing and accessories

The emphasis is on presenting flattering looks that go beyond the black dress or suit. They will suggest must-haves for building a versatile wardrobe, show accessories that will give outfits an individual look, and feature clothes to wear for almost any occasion, be it a funeral, a barbecue, a job interview, a rock concert, a movie, a New Year's Eve bash, or a night at the opera. Learn how to look simply chic and assert your identity with style.

Deadline to register is April 17; admission to the Luncheon is \$26. For more information or to register, call the ANC Department of Community Education at 870-762-3167

Delta Byways Awards Banquet

The Arkansas Delta Byways Banquet, which was cancelled due to the February ice storm, has been rescheduled for Friday, May 29, at 6:30 pm at the Paragould Community Center, 3404 Linwood Drive. Winners of the Delta Awards will be announced at the banquet.

All previous tickets will be honored. If you would like to purchase additional tickets, a form is included at the end of the newsletter. For additional information contact Paula Miles at 870-972-2803.



Wild Hog Music Festival and Motorcycle Rally

Music, motorcycles, field events, fun, motorcycles, food, prizes, and motorcycles are headed for Helena-West Helena on April 22-26 as the Wild Hog Music Festival and Motorcycle Rally roars into town. Musical performances include Kiss, Mustang Sally, Alabama Blues Brothers, Jason D. Williams and Tributes to Pink Floyd, Lynyrd Skynyrd, Creedence Clearwater, the British Invasion, and Conway Twitty.

Thursday festivities kick off with on-site Registration at the Wild Hog Saloon at 6:00 pm. A Sponsor, Volunteer and Early Bird Party from 6:00 - 8:00 pm will be followed by live entertainment by the Lil' Biscuit Band until Midnight at the Wild Hog Saloon, 1 block south of main stage, behind Olivers' Restaurant. Friday features music from 4:00 pm until midnight by Jamestown Flood, PULSE, Jason D. Williams, and the Curtis Loew Band. At 6:00 pm an escorted bike parade will wind through the Helena-West Helena area.

The Poker Run begins at 10:00 am on Saturday morning. Music continues throughout the day until midnight. Field Events and a Bike Show are from 2:00 - 4:00 pm and winners will be announced at 5:00 pm. The festival wraps up on Sunday morning at 9:30 am with the CMA worship services and Blessing of the Bikes on Cherry St.

- For additional information call 870-572-1000 or email festival chairman Johnny Broome at jbroom68@gmail.com
- For information on volunteering contact Billy Ray at b.ray@phillipscountychamber.org
- For Field Events and Bike Show information email Romey Clark at romeyandpat@suddenlink.net
- For information on the Poker Run or Pre-registration email Bud Ainsworth at bud@qualityresp.com
- For complete details on musicians and performance times, see the Festival website at <http://www.wildhogmusic.org/>

Springtime on the Mall

Springtime officially arrives in historic downtown Blytheville on Saturday, May 2. The annual Springtime on the Mall, from 10:00 am to 5:00 pm, will include food, fun, and a grand unveiling.

Vendor booths will feature crafts, information, and food, and designated blocks will be reserved for garage sale and flea market booths. Other events include a car show, Great Southern Gospel music, and a catfish fry. Before the festival, the Blytheville Kiwanis Club will host their annual Kids Fishing Derby at Walker Park.

The highlight of the festival will be the unveiling of a mural at the Pocket Park gazebo and fountain. The community project of the Blytheville Leadership Class of 2007-2008, the mural depicts historic Blytheville – the Mississippi River, logging, the Frisco Railroad, and cotton fields. The mural, which is 20 feet tall and 80 feet long, will be dedicated at 1:00 pm. Jonesboro watercolorist and architectural illustrator Suzanne Churchill, who created the mural, will be at the ceremony.

For further information or an application to participate in the festival, contact the Blytheville/Gosnell Area Chamber of Commerce by phone at 870-762-2012 or by email at info@blythevillegosnell.com



2008 Wild Hog Rally



Downtown Blytheville



Blytheville's Pocket Park

On the Rock 'n Roll Highway



Gov. Mike Beebe jams with the
Legendary Sonny Burgess



Elvis Presley performing at the
Swifton gym, Dec. 1955



The B&I Club in Swifton

A bill signed by Gov. Mike Beebe on April 3 may create a major musical tourist attraction in the Crossroads Coalition. The section of US 67, which runs through Jackson, Randolph, and Lawrence counties in northeast Arkansas, was officially renamed "*Rock 'n Roll Highway*."

The designation results from the efforts of a committee that began meeting in December of 2007. Their goal was to have the highway renamed and develop ways to attract tourists to the area to learn of the rich musical history provided by the night clubs along the stretch of highway.

"Growing up as a teenager in Newport, it was easy to take for granted the constant flow of rock-and-roll talent who traveled along U.S. 67 in Northeast Arkansas," Gov. Beebe said. "The designation of the *Rock and Roll Highway* will serve as a proud reminder of this region's role in music history, and will hopefully bring more people here to learn the legacy of the halls and clubs that hosted so many legends,"

A major music attraction currently on the *Rock 'n Roll Highway* is the annual Depot Days Festival in Newport. Now in its 12th year, Depot Days has become a family tradition for those who love to listen to the oldies and just want to get out and dance. Rock 'n Roll Highway Committee member Henry Boyce, district attorney for the three counties and organizer of Depot Days said the highway designation provides the potential for economic development in the area.

"This is a very exciting time for Jackson County," Boyce said. "But for the efforts of J.R. Rogers, this would've never happened. I think the *Rock 'n Roll Highway* is the product of Sonny Burgess and Billy Lee Riley continuing to keep the music alive all these years. If younger generations couldn't hear the music and been inspired by it, they wouldn't have been interested in the highway."

Rockabilly legend Sonny Burgess, who performed at the signing ceremony, said he felt *Rock 'n Roll Highway* is an appropriate name for the stretch of road. "It was the musical world," he said. "Everybody in the world played in Jackson County in the '50s and '60s."

During that time US 67 boasted a swath of funky roadhouses that appealed to the earliest rock and roll stars. Performers like Elvis Presley, Johnny Cash, Carl Perkins, Charlie Rich, Jerry Lee Lewis, Conway Twitty, Levon Helm, Narvel Felts, Sleepy LaBeef, Sonny Burgess, Billy Lee Riley, and Ronnie Hawkins earned their status as legends by piling into their Chevies and working their way up and down the strip.

After spending their weekdays working in the fields, locals would turn out on Saturday nights to places like the Silver Moon Club in Newport or the B&I Club in Swifton. According to the Encyclopedia of Arkansas History and Culture, "Some (of these) establishments were small, rough country venues where farmers in bib overalls arrived on tractors, seeking evenings of excessive drinking, fighting, and flirtation. Some clubs, such as Beverly Gardens in Little Rock, could accommodate 200 to 300 people. The largest club in Arkansas at this time was the Silver Moon in Newport, which could seat more than 800 people."

Every weekend locals could see the influential figures in early rock 'n' roll history playing live in the clubs along US 67. The Silver Moon and the B&I Club are still there, although they have different owners now. Other clubs on the *Rock 'n' Roll Highway* during the 1950s and 1960s included Mike's 67 Club, and Porky's Roof Top Club in Newport and the Cotton Club in Trumann, where Jerry Lee Lewis and Roy Orbison put on legendary shows.

Jobs, Infrastructure, Energy Targeted

Crossroads Coalition was the first regional group to request a briefing from the Governor's office regarding the Arkansas Stimulus Plan. The March 18 meeting drew more than 100 participants.

In Arkansas, stimulus funds will be used to target

- saving and creating jobs,
- building infrastructure,
- energy and weatherization efforts,
- soil and water projects and
- broadband development.,

Details on the use of stimulus funds in Arkansas, visit the Arkansas Recovery website: www.recoveryarkansas.gov

The following summary of the impact of the ARR is drawn from information provided by the nonprofit Food Research and Action Center at www.frac.org and the USDA at www.USDA.gov.

ARR provisions include:.

- **TAX CREDITS**
 - Expands the refundable Child Tax Credit, allowing families to begin qualifying for the child tax credit when earnings go over \$3,000.
 - Expands the Earned Income Tax Credit for families with three or more children .
 - Increases marriage penalty relief.
- **CHILD DEVELOPMENT**
 - Provides \$1.1 billion for Early Head Start and \$1 billion for Head Start, making 110,000 additional low-income infants and preschool children eligible for services.
 - Gives \$2 billion to the Child Care Development Block Grant, providing child care services to an additional 300,000 children in low-income families while their parents go to work.
- **UNEMPLOYMENT**
 - Continues extended unemployment benefits program through December 2009.
 - Increases unemployment benefits for 20 million jobless workers by \$25 per week.
 - Suspends time limits on eligibility for jobless adults without dependents through FY 2010 unless a state chooses to offer workfare slots.
 - Provides benefits for workers who have had their work hours reduced involuntarily until they cannot qualify for full unemployment benefits.
- **FOOD PROGRAMS**
 - Designates \$100 million for school food service equipment grants.
 - Adds \$100 million for Emergency Food and Shelter to help local community organizations provide food and shelter to the needy.
 - Provides \$100 million for formula grants to states for elderly nutrition services, including Meals on Wheels.
- **OTHER PROGRAMS**
 - Provides a one-time extra payment of \$250 to SSI recipients.
 - Makes \$2 billion available for community health centers.



Read More About It...

- ★ To get a copy of the ARR...
- ★ To find out about business opportunities, benefits, grants and contracts ...
- ★ To see where the stimulus money is being spent ...
- ★ To find out the latest news ...
- ★ To get answers to your questions ...
- ★ To track the progress and resources by state or federal agency...

Visit the official ARR web site:

www.recovery.gov



DELTA REGIONAL AUTHORITY

Annual Conference Focuses on Regionalism

The 5th Annual Conference of the Delta Regional Authority (DRA) will be April 27-28 at the Marriott Downtown in Memphis. The conference theme is *Models of Success*. The conference is expected to attract several hundred business and community leaders from throughout the eight-state DRA region.

Admission to the Conference is free, but space is limited for some events, so early registration is encouraged. To register go to www.dra.gov. For additional information, call Sissy Kidd at (501) 686-6195. To reserve a room at the Memphis Marriott Downtown call 1-888-557-8740

On-site registration for the conference will open at noon Monday, April 27. Conference speakers include Tennessee Gov. Phil Bredesen; Tennessee tourism commissioner Susan Whitaker; John Calipari, former head men's basketball coach at the University of Memphis; and Jesse White Jr., director of the Office of Economic and Business Development at the University of North Carolina at Chapel Hill.

The U.S. Department of Defense will conduct innovative readiness training and a grants workshop for community leaders on Monday. Tuesday breakout session topics are:

- sustainable tourism approaches for Delta communities,
- innovative education approaches ,
- attracting retirees to Delta communities,
- alternative energy,
- transforming workforce development in the region, and
- the importance of regionalism in economic development.

A gala reception will be held at 5:00 pm on Tuesday in the Peabody Hotel in downtown Memphis, sponsored by the Memphis Regional Chamber, the Southwest Tennessee Development District, and the Northwest Tennessee Development District.

The DRA is a federal-state partnership that serves parts of Alabama, Arkansas, Illinois, Kentucky, Louisiana, Mississippi, Missouri and Tennessee. The board comprises the governors of the eight states; federal co-chairman Pete Johnson of Clarksdale, Miss.; and state co-chairman Gov. Bob Riley of Alabama.

MISSISSIPPI DELTA GRASSROOTS CAUCUS

Delta Initiative Rescheduled

The 2009 Mississippi Delta Grassroots Caucus Delta Initiative has been rescheduled for Sept. 15 -17 in Washington, DC. The original date of June 2-4 was changed for financial reasons and because of the unprecedented delays in the Senate confirmation process.

"As of now many of the sub-cabinet members, heads of federal agencies, the Federal Co-Chair and Alternate Federal Co-Chair of the Delta Regional Authority, and other officials of the Obama administration have either not been nominated or not yet confirmed," explained Caucus director Lee Powell. "It will be beneficial to have them all in office when we have an important dialogue with them, so postponing the conference made a lot of sense."



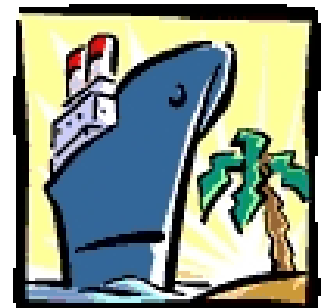
**USDA Building,
Washington DC**

FOUNDATION FOR GLOBAL MOBILITY

The Global Green Initiative: Transportation in Transformation

Leaders from industry, government and academia will meet in Memphis on April 20-22 to engage in three days of dialogue designed to help evaluate strategies for implementing “green” transportation. Educational sessions and exhibits on corporate strategy, enabling technology, and public policy will focus on: trends and technologies in alternative energy for powering transport vehicles, collaboration between suppliers and consumers of transportation services in greening their supply chains, and long-term sustainability of logistics operations. Financial and policy leaders will address investment in green technology, green infrastructure and energy priorities, and the funding challenges that lie ahead.

Sponsored by the Foundation for Global Mobility, the Conference will be held at the FedEx Institute of Technology at the University of Memphis. Registration Fee: \$249 for delegates and \$65 for students. All registrations will be processed on site at the Conference location. For more information go to: <http://www.gmfoundation.org/about.html> or contact Natalie Ruffin at (901) 678-5000.



Coming Conferences

2009 Arkansas Rural Development Conference

June 2-4

Hot Springs, AR

<http://www.state.ar.us/drs/>

Southern Growth Policies Board 37th Annual Conference: The Business of Southern Energy

June 7-9, 2009

Biloxi, MS

<http://www.southern.org/conference/conf.shtml>

Mississippi Delta Grassroots Caucus Delta Initiative

Sept. 15-17

Washington, DC

<http://www.mdgc.us/>



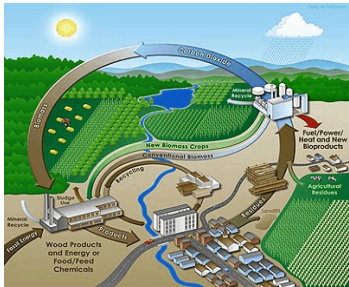
Base Acreage Rule Rescinded

Agriculture Secretary Tom Vilsack announced April 4 that the rule terminating base acres on federal land has been rescinded. As a result, farmers who lease federal land are again considered eligible to receive payments under the Direct and Counter-cyclical Program (DCP) on federal land with base acres.

"Terminating base acres on federally-owned cropland would have hurt farmers across the United States and eroded the safety net for farmers and ranchers," said Vilsack.

This decision rescinds the part of the Dec. 23, 2008, DCP final rule, which terminated base acreage on federal lands. The rule directed that beginning in crop year 2009, producers who leased federal land would no longer be eligible for DCP payments authorized under the 2008 Farm Bill.

"I'm pleased to see this misguided rule, first enacted under President Bush, rescinded," said U.S. Rep. Marion Berry (D-Gillett). "I will continue to oppose all mid-stream changes to the 5-year agreement that Congress made with American farm families with the 2008 Farm Bill."



USDA ADVISORY COMMITTEE

Nominations Reopened

The USDA announced the reopening of nominations for its Advisory Committee on Biotechnology and 21st Century Agriculture (AC21) on April 2. The Committee will examine the long-term impacts of biotechnology on the U.S. food and agriculture system and provide guidance to USDA on individual issues related to the application of biotechnology in agriculture.

"Products produced from biotechnology will continue to be an important part of U.S. agriculture, and USDA has a complex and critical role in protecting consumers, the environment, and the farm economy while also contributing to global food needs," said Secretary of Agriculture Tom Vilsack. "This Advisory Committee will be asked to bring information and insights to inform our decisions, in keeping with President Obama's commitment to seeking the best advice available."

USDA encourages nominations from a broad range of interests including scientists, consumer advocates, agricultural producers, medical professionals, international traders and others with a stake in USDA programs. The Committee comprises 20 to 25 members, representing a broad range of interests and expertise. Appointees will serve terms of up to two years and can be reappointed to serve up to six consecutive years. At least 12 slots on the committee, including the Chair, are open. Deadline for submitting nominations is April 29. Details for submitting a nomination are on the web at:

<http://edocket.access.gpo.gov/2009/E9-6884.htm>

Arts in Crisis

The John F. Kennedy Center for the Performing Arts recently announced *Arts in Crisis*, a program designed to provide emergency planning assistance to struggling arts organizations throughout the United States. Expanding on previously existing arts management programs at the Kennedy Center, *Arts in Crisis* will provide free consulting from both Kennedy Center President Michael M. Kaiser and members of the Kennedy Center's executive staff.

Arts in Crisis was developed as a response to the emergency facing arts organizations throughout the United States. The current economic climate has reduced earned and contributed income, decimated endowments, and left some organizations struggling for survival. Companies of all sizes, localities, and performing arts disciplines have been affected. The program, open to non-profit 501(c)(3) performing arts organizations, will provide free and confidential counsel in fundraising, building more effective Boards of Trustees, budgeting, marketing, and other areas pertinent to maintaining a vital performing arts organization during a troubled economy.

"These are times of economic crisis and as the nation's center for the performing arts, we wish to help," said Kennedy Center President Michael M. Kaiser. "If any arts organization in the United States believes we can assist, the senior staff of the Kennedy Center and I offer our collective skills. We are at your service."

Kaiser speaks from experience. Over the past several years while at the Kennedy Center, he and his executive staff have assisted the leaders of numerous companies through the Kennedy Center Institute for Arts Management. The Institute provides a wide variety of training and support for arts management, including:

- a capacity building program for culturally specific arts organizations;
- a program to train board members of arts organizations throughout the United States;
- international capacity-building programs for arts organizations in 60 nations;
- a capacity building program for over 250 arts organizations in New York City; and
- *artsmanager.org*, an interactive web resource for arts management professionals. The Kennedy Center also offers internship and fellowship programs, exposing arts professionals to various facets of arts management.

Through its website, *Artsincrisis.org*, the Kennedy Center will also enable senior arts managers across the United States to volunteer to serve as mentors to other arts organizations.

"There are many talented arts administrators around the country, and we encourage them to lend their expertise," said Kaiser. "If all of us work together, we can turn a time of crisis into a time of opportunity."





Although consumer demand is high, the current reality is that most of this market need is unmet because small- and medium-scale agricultural producers and processors do not have access to facilities to aggregate their products to provide scales needed by larger markets. In addition, most small producers don't have necessary insurance, product tracking, documented food safety systems and other food distribution programs needed by larger distributors.



Jon Johnson,
executive director,
Applied Sustainability
Center

Resources for the Furred and Feathered

Treatment of animals and the laws governing that treatment are important to anyone who has interaction with animals -- from pet-owners to hunters to producers who raise livestock, poultry, or even fish. Laws governing specific treatment of animals in certain circumstances have been enacted in all 50 states and by the federal government, and public interest in the subject continues to grow, especially for agricultural issues.

As a result of this growing interest, the National Agricultural Law Center recently posted a new Animal Welfare Reading Room (AWRR) on its website:

<http://nationalaglawcenter.org/readingrooms/animalwelfare/>

The AWRR contains an overview article and a listing of and links to major statutes and regulations as well as an extensive case law index, relevant legal publications and important materials from government agencies, as well as many other resources that will be helpful from both a legal and a practical standpoint to a wide variety of people. Users can access electronic copies of research publications on states' animal cruelty statutes, congressional reports on animal agriculture and environmental issues, links to dozens of national resources like the National Agricultural Library, the Animal Welfare Information Center, the Animal and Plant Health Inspection Service, the Livestock Behavior Research Unit, *Animal Law Journal*, the National Institute for Animal Agriculture, the Center for Wildlife Law and the National Chicken Council (insert your own joke here). The site also includes a list of non-legal recommended publications.

Agile Agriculture

Demand for locally grown food is increasing rapidly across the United States. **AGILE AGRICULTURE** is a new project of the Applied Sustainability Center (ASC) at the University of Arkansas that will facilitate the participation of rural entrepreneurs in accessing these opportunities.

The goal of **AGILE AGRICULTURE** is to facilitate the availability of a safe, consistent and reliable supply of relevant products for purchase in the marketplace by large-scale buyers. The focus is on enhancing profitability for both existing and potential sellers and buyers in ways that create more sustainable agricultural systems.

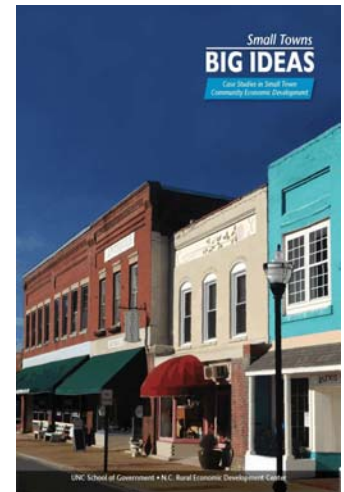
Founded on the belief that sustainability is one of the 21st century's biggest business challenges and opportunities, ASC is exploring ways to develop this capability in rural areas. To this end, ASC has partnered with the National Agricultural Law Center to examine the relevant legal and regulatory issues in this context, including insurance, product traceability, documented food safety systems and other regulatory issues related to food distribution programs.

For more information and links to additional resources follow the **AGILE AGRICULTURE** link when visiting the Applied Sustainability Center website at: <http://asc.uark.edu>

Small Towns, Big Ideas Project

Helena-West Helena is featured in a new publication, *Small Towns, Big Ideas: Case Studies in Small Town Community Economic Development*, recently published by the North Carolina Rural Economic Development Center. It is one of 18 towns profiled in the collection, which features real stories, from real places that are successfully confronting real challenges similar to those facing small communities everywhere, such as globalization, geographic isolation, urban sprawl, aging populations, and natural disasters.

The publication is an outgrowth of the Small Towns, Big Ideas project that began in mid-2006, when the UNC School of Government partnered with the North Carolina Rural Economic Development Center to identify and document 50 small towns in 18 states that were implementing successful or innovative approaches to community economic development. The case studies are told in an engaging narrative and include information useful to civic leaders in small communities and policymakers dealing with rural development issues. *Small Towns, Big Ideas* can be downloaded at <http://www.sog.unc.edu/programs/cednc/stbi/> or <http://www.ncruralcenter.org/>



GO! Community Hunger Grant

Quaker Oats is offering grants for projects that will help combat hunger in community. The Quaker Go Grant program will select 20 winners each month from April through August 2009. Winners will each receive a \$500 cash grant to fund their projects.

A completed Application form, which includes a 150-word description of your project to help combat hunger in your community, should be submitted. A Selection Committee will review each month's submissions and award Quaker Go Grants based on originality/uniqueness (50%); relevance to fighting hunger (30%); and potential impact on community/individuals involved (20%). Winners will receive a \$500 grant to make their project a reality. Winners must agree to show Quaker the results from the grant by submitting a description, photo and/or video telling how the money was put to good use.

Application deadlines for the monthly awards are April 30, May 31, and June 30. Application forms can be downloaded and submitted online at <http://quakeroats.promotions.com/gogrants/splash.do>.



Users Guide for Federal Stimulus Money

The recently passed \$787 billion American Recovery and Reinvestment Act presents both great opportunities and challenges for local and state advocates, nonprofit organizations, public agencies, and policymakers in making the best use of recovery dollars. The big, bold historic investment is intended to kick-start the United States economy and lay the foundation for long-term economic growth and stability.

If invested wisely, it can also serve as a down payment on building an inclusive green economy strong enough to lift people out of poverty. The challenge is the political and economic urgency to spend Recovery Act funds quickly in order to put large numbers of people back to work. Non-profit groups Green For All and PolicyLink have prepared a *User's Guide* to assist leaders and groups in securing and deploying these one-time most effectively. Read more about the guide at www.greenforall.org/resources/recoveryusersguide.



EDUCATION



ACTION AGENDA

Arkansas Procurement Assistance Center

How to Complete Bid Forms

Wednesday, April 15
at the Technology Center for the Delta
1790 North Falls Blvd in Wynne

The Arkansas Procurement Assistance Center will present a two-hour workshop, "How to Complete Bid Forms," from 1:00 to 3:00 pm, followed by Office Hours until 4:30, pm. During Office Hours the Instructor will be available to counsel anyone on any topic related to selling products or services to federal, state, or local governments. The workshop is free and open to the public, hosted by Cross County Chamber of Commerce, To register call (501) 337-5355 or register online at <https://www.sbassist.com/services/register.php?id=5912925405>

CROSSROADS CONTACTS

Crossroads Connection

is published monthly by the Crossroads Coalition in partnership with the University of Arkansas Economic Development Institute (UAEDI).

Technology Center for the Delta,
1790 N Falls Blvd,
Wynne, AR 72396

Carolyn Garcia, Editor
Contact Crossroads Connection
by email at:
editor@CrossroadsCoalition.org

©2009 by the Crossroads Coalition.
All rights reserved.

FOR MORE INFORMATION ABOUT . .

THE CROSSROADS COALITION:

Contact Executive Director Melissa Rivers at (870) 238-5300 or mrivers@crossroadscoalition.org

CROSSROADS COALITION BOARD OF DIRECTORS:

LeRoy Dangeau, Chairman, (870) 238-7844; dangeau@sbcglobal.net

CROSSROADS COALITION PILLAR GROUPS:

- COMMUNITY DEVELOPMENT – Pat Audirsch, Marianna Economic Development Commission, (870) 295-6510,
- ECONOMIC DEVELOPMENT – Doyle Fowler, owner, The Ken Theatre
- LEADERSHIP DEVELOPMENT – Jerry Smith, director, EDA University Center for Regional & Community Development, Delta Center for Economic Development, Arkansas State University; (870)910-8180; FAX: (870) 910-8185
- EDUCATION DEVELOPMENT – Artie George, Marianna

UAEDI

Contact Otto Loewer at the University of Arkansas Economic Development Institute (UAEDI): ojl@uark.edu; 479-575-5118; fax: 479-575-2412; <http://uaedi.cast.uark.edu>

VISIT THE CROSSROADS COALITION WEB SITE AT
<http://CrossroadsCoalition.org>



**9th Arkansas Delta Byways Awards
May 29, 2009**

**Paragould Community Center
3404 Linwood Drive, Paragould, Arkansas**

**5:30-7:00 p.m. Silent Auction
7:00 p.m. Dinner**

Banquet Reservation Form

Number of tickets _____ @ \$25 each = _____

Number of tables (seating for 8) _____ @ \$175 per table = _____

TOTAL AMOUNT ENCLOSED _____

Name of county, city, or organization that you wish to have listed on table card

NAME: _____

ADDRESS: _____

TELEPHONE: _____

For seating arrangements and nametag purposes, please list names of those who will be accompanying you.

MAIL TO: Arkansas Delta Byways
P. O. Box 2050
State University, AR 72467 or pmiles@astate.edu



6th Annual Gumbo Fest

Saturday, April 18, 2009
Mid-Continent Plaza parking lot
Noon - 9:00 p.m.

10:00 a.m. Setup booths, Cooking begins at Noon. Judging ; Chicken Wings, 3:00 p.m., Exotic Meats 4:00 p.m., Gumbo 5:00 p.m. Results will be announced at 6:30 p.m. and shut down at 9:00 p.m.

Cooking Contest Application
Deadline for entries is Monday, April 13, 2009

Team Name: _____ **Head Cook:** _____
Address: _____
City, State, Zip: _____
Phone: _____ **Fax:** _____ **Email:** _____

Team Entry Fee \$50
(includes: Head Cook, 4 team members & one cooking category)
\$10 for each additional category
Circle Cooking Category:
Gumbo Chicken Wings Exotic Meats

Team Members

1. _____ 2. _____
3. _____ 4. _____

Additional Members
\$5.00 for each additional member

1. _____ 2. _____
3. _____ 4. _____

Return form & make checks payable to West Memphis Chamber of Commerce
108 W. Broadway West Memphis, AR 72301
Ph: 870-735-1134 Fx: 870-735-6283
hhammett@wmcoc.com

Wild Hog Musicfest & MC Rally

Helena, Arkansas Thu, - Sun April 23-26, 2009

Registration to the Wild Hog Music Fest & MC Rally includes:

1. Entry to the downtown festival grounds and bike parking.
2. General Admission to all festival music.
3. Entry in the bike parade.
4. One poker run entry / additional hands \$5.00.
5. Entry in any and all field events.
6. Entry in Bike Show
7. Eligible for prize drawings throughout festival.
8. **Choose one Pin _____ Patch _____**
9. **Entry into Wild Hog Saloon**

Wild Hog Music Fest & MC Rally

Basic registration fee:

\$30.00 for bike & rider.

Passenger registration is **\$10.00**.

Save **\$10.00**

Register before **April 1, 2009**

entitles bike, rider & passenger
to register for **\$30.00**.



\$100 Wild Hog "VIB" (Very Important Biker)

Registration for rider & passenger (\$40.00 Value),
2 pins or patches (\$10.00 Value), **2 VIB access** to front of
music stage (\$100.00 value), **2 Poker run entries** (\$10.00 value)
Two festival shirts (\$40.00 value), + website recognition (priceless).
A \$250.00 value for only \$100.00
Check here for VIB Registration _____

Make Checks Payable To: **Wild Hog MusicFest & MC Rally 2009**
Mail this registration form, signed and fee to:

Wild Hog Music Fest 2009
1231 Hwy 49 W
West Helena, AR 72390

Voice # **870 572-1000**
Fax # **870 572-4130**

Wild Hog MC Rally Waiver of Liability

I and/or we, the undersigned, agree to indemnify and hold harmless the Wild Hog MusicFest & Motorcycle Rally, collectively or its officers and assistants individually, from all cost, expense, and liability arising out of my and/or our person(s) or property(s) which may be caused by any act or failure to act, by the Wild Hog Music Fest & Motorcycle Rally event, its officers, agents or by the City of Helena, Arkansas arising directly or indirectly from my and/or our participation in any event or presence at the event, and I hereby assume liability for any loss, damage or other liability from such events. I certify that I am an experienced motorcyclist holding a valid motorcycle endorsement on my driver's license. I am aware of the dangers and risks inherent to motorcycle operations including the risk of serious bodily injury or death to motorcycle operators and passengers; that I have liability insurance covering my operations of my motorcycle; that other motorcyclists are participating in such event and their operations may constitute a hazard to me or my motorcycle and the Wild Hog Music Festival & Motorcycle Rally, its officers, agents, and employees are entitled to rely upon the representations made by me herein.

Dated this, the _____ of _____, 2009

Please Print Legibly

Rider's Name: _____

Signature: _____

Address: _____

City: _____ St: _____ Zip: _____

Rider's E-Mail Address: _____

Pass. E-Mail: _____

Passenger Name: _____

Signature: _____

Address: _____

City: _____ St: _____ Zip: _____